

# Mistral



# IMC's range of bar refrigeration

Designed to perform, engineered to last.

## Ventus Stylish performance



Featuring IMC's new Eco Smart and Dynamic Air Distribution System to provide a market-leading energy saving solution, both fitted as standard to all Ventus models.

The Ventus range of bottle coolers combines the very best in cooling technology, making it ideal for storing all types of beer and white wine.

The high-quality stainless steel interior offers both extreme good looks and high levels of hygiene as standard. All models are available in a range of colours and stainless steel finishes.

With over 200 options to choose from, including the all new 800mm high under counter unit, Ventus now offers a bespoke bottle cooler without the bespoke price.

## Mistral Perfect Chilled Display Solution



Mistral bottle coolers are designed and manufactured to the most demanding specifications incorporating energy efficient forced air cooling to ensure drinks are kept at the perfect serving temperature at all times. All Mistral coolers have lockable

doors and are available in a range of models to suit all your capacity requirements.

The Mistral range is equipped as standard with electronic temperature controllers with automatic defrost ensuring precise monitoring and control of internal temperatures.

## Hurricane Outstanding Value



The Hurricane range of bottle coolers are the perfect showcase for bottled and canned drinks in restaurants, bars, pubs and clubs, giving you quality, style and, above all, value for money. Extremely robust, these high quality fridges have been built to

withstand conditions in the busiest of bars, ensuring years of use and reliability.

Their stylish appearance means they'll effortlessly complement any interior, their price ensures you're getting the most for your money.



IMC was founded in 1906 and has since established itself as a leading manufacturer of commercial catering and bar equipment, with a reputation for quality, innovation and unrivalled customer service.

### Imperial Machine Company Limited

Unit 1 Abbey Road, Wrexham Industrial Estate  
Wrexham LL13 9RF United Kingdom  
Tel: +44 (0)1978 661155 Fax: +44 (0)1978 729990  
Email: sales@imco.co.uk Web: www.imco.co.uk



Specifications are subject to change without notice.

# Mistral

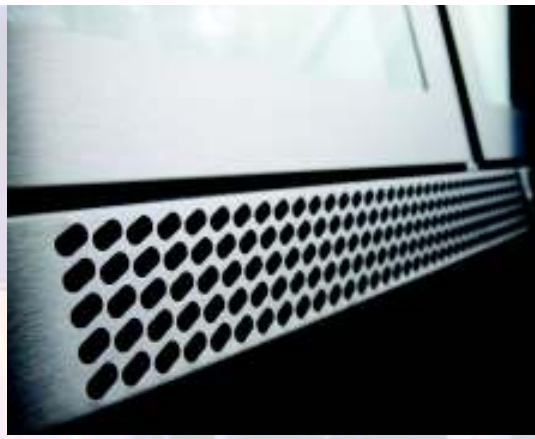
**Bottle Coolers**

**Designed to perform, engineered to last**

***imc***



Lockable doors are included as standard on all Mistral bottle coolers.



Mistral is the perfect showcase for bottled and canned drinks in restaurants, bars, pubs and clubs, giving you stylish, high capacity, high visibility storage and display options.



**M60** stainless



**M60** silver



**M60** black



With their sleek, dynamic design, Mistral bottle coolers are the perfect chilled display solution for all types of contemporary and traditional bars.





Mistral bottle coolers combine elegant styling, robust construction and innovative design features, ensuring maximum operating life, easy cleaning and quick and simple servicing.



The Mistral range of bottle coolers is equipped as standard with an electronic temperature controller with automatic defrost ensuring precise monitoring and control of internal temperature.



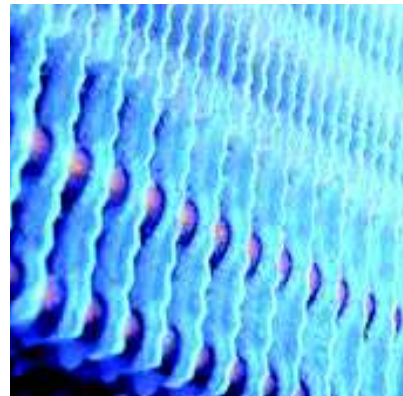
**M90** stainless



**M135** stainless



The easily adjustable shelving layout provides high product visibility. Wine shelf options are available for all Mistral models.



Energy efficient forced air cooling ensures that drinks are kept at the perfect serving temperature at all times.

Dimensions	W (mm)	D (mm)	H (mm)
M60	600	500	900
M90	900	500	900
M90 Sliding Door	900	520	900
M135	1350	500	900
TC60	600	500	1850



A solid door option is available on all models (excluding TC60). The M90 model is also available with sliding doors.



**TC60** stainless



Available in single, double and triple door versions, the high quality Mistral range is supplied in a choice of stainless steel, painted silver or black finishes.